



Pender Wall

VANCOUVER, BC • VANCOUVER MARKET

Pacific Centre is a well-known landmark in downtown Vancouver. Stretching three city blocks from Pender to Robson Streets, the mall has direct connections to seven office towers, The Four Seasons Hotel and The Bay. Pacific Centre is one of Vancouver's premier fashion centres with over 140 stores including Sears and Holt Renfrew. The centre attracts almost 400,000 visitors weekly with tourists accounting for 28% of shoppers.

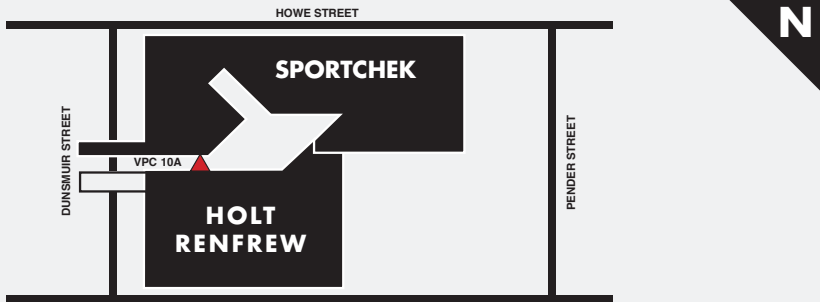
ANNUAL VISITORS

- 14,086,144

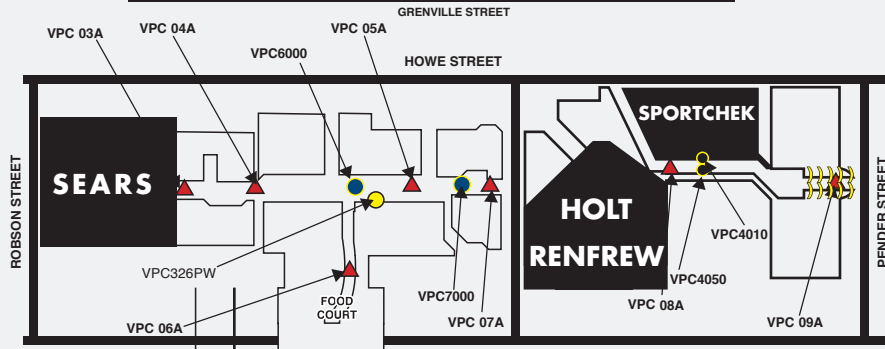
PRODUCTS AVAILABLE

	PRODUCT	SIZE	2010 RATE (4 WEEKS/NET)	INSTALLATION	PRODUCTION PER FACE
●	BULKHEAD	18' W x 4' H	\$4,500 / FACE	\$630 + \$870 LIFT CHARGE	\$840
●	PANOMAX MALL BANNER (SINGLE SIDED)	9' W x 12' H	\$4,600 / FACE	\$2,500	\$1,178
▲	MALL POSTER	4' W x 6' H	\$800 / FACE	N/A	\$160
●	PENDER WALL	30' W x 12' H	\$9,000	\$1,610	\$2,860
)	TRUMPET BANNERS	2' W x 7' H	\$440 / FACE	\$85 + \$650 LIFT CHARGE	\$200

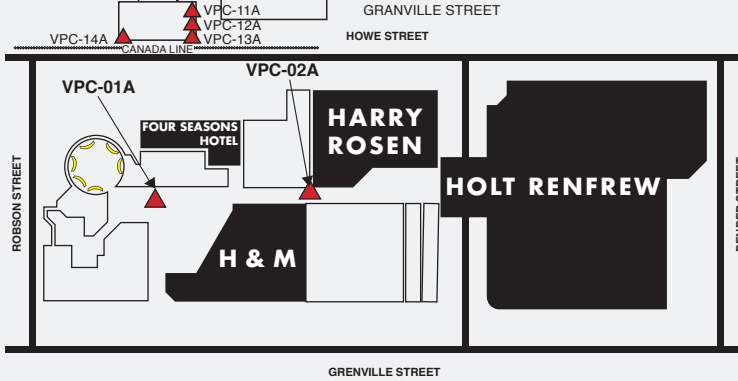
LEVEL 1



LEVEL 2



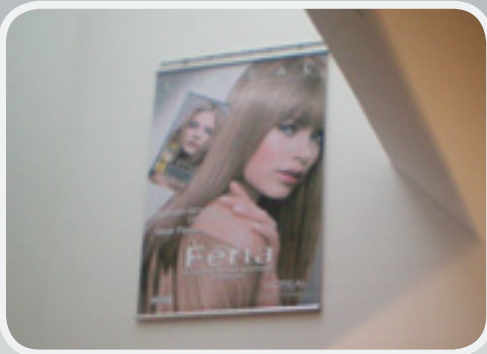
LEVEL 3



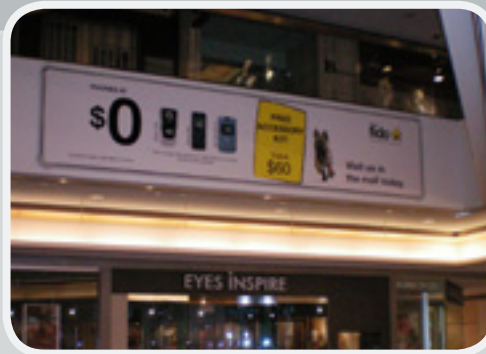
VENUE MAP

PACIFIC CENTRE MEDIA PORTFOLIO

MEDIA CATALOGUE



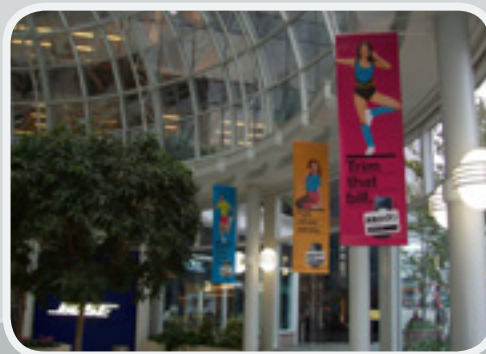
9' W x 12' H Mall Banner



18' W x 4' H Mall Bulkhead



4' W x 6' H Mall Poster



2' W x 7' H Trumpet Banners